

**1702 Ponderosa
College Station, TX**



JOHN R. CLARK
AND ASSOCIATES
Real Estate Services - Commercial • Land • Investment

3828 S. College Ave.

Bryan, TX 77801

Phone (979) 268-6840

Fax (979) 268-6841

www.johnclark.com

No warranty or representation, expressed or implied is made as to the accuracy of the information contained herein, and same is submitted subject to errors, omissions, change of price, rental or other conditions, withdrawal without notice, and to any special listing conditions imposed by the owner.

Summary

1702 Ponderosa

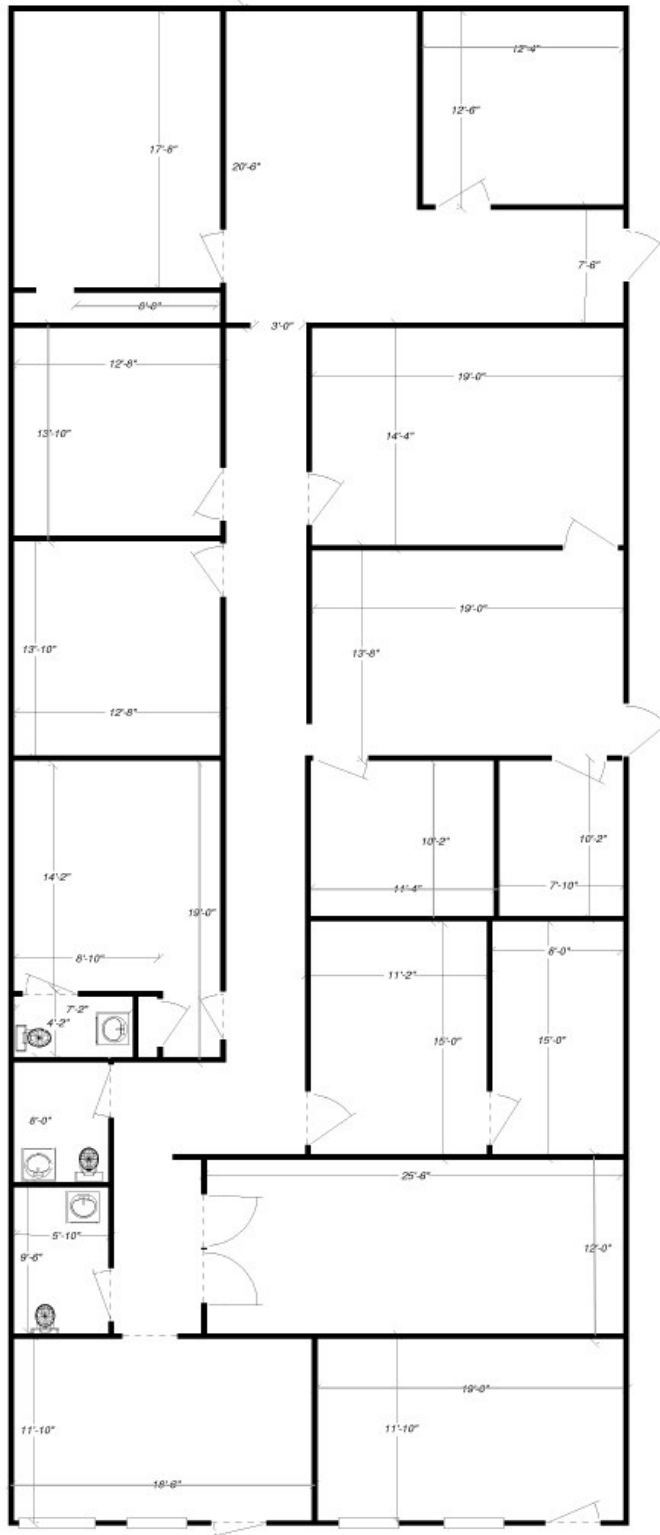
- 4,000 SF of excellent office space
- Current tenant on Month-to-Month basis – Available with 30 day lead time
- Conveniently located off of Longmire Dr. in south College Station
- Newly resurfaced and restriped asphalt parking lot
- Office area has recently been repainted and professionally cleaned



PROPERTY PHOTOS



1702 PONDEROSA FLOOR PLAN



ALL MEASUREMENTS APPROXIMATE